

Tento materiál byl vytvořen rámci projektu EU peníze školám
Operačního programu Vzdělávání pro konkurenceschopnost

 ZŠ ÚPRKOVA

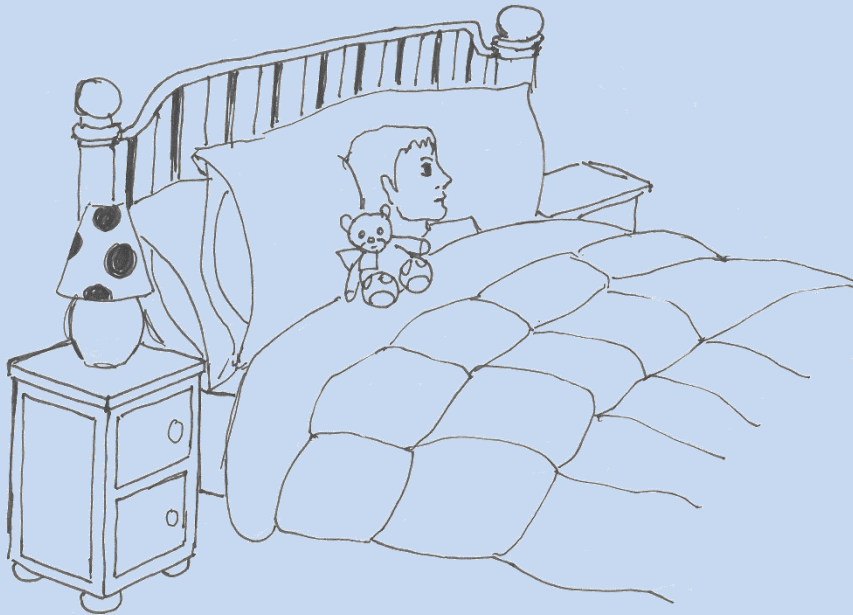
Název školy:	Základní škola a Mateřská škola, Hradec Králové, Úprkova 1
Autor:	Mgr. Petra Vrábelová
Název:	VY_32_INOVACE_6C_19_Present simple exercises
Téma:	6C_Aj 5. roč.
Datum ověření:	VM ověřen dne 6. 12. 2012 v 5.A,B
Číslo projektu:	CZ.1.07/1.4.00/21.3215
Anotace:	DUM je zaměřen na přítomný čas prostý. Žáci mají možnost na jednotlivých příkladech si učivo procvičit a znalosti týkající se tohoto času upevnit. Vytvářejí správné tvary ve všech osobách , tvoří věty ve správném slovosledu, vybírají správný tvar z několika možností, procvičují kladné, záporné i tázací věty, připomenou si i tvoření krátkých odpovědí.

Present simple

Exercises

Choose the correct answer.

1. He usually _____ at 10 p.m.



- a) wakes up
- b) goes to bed
- c) eats

2. Anna likes to _____ every day.



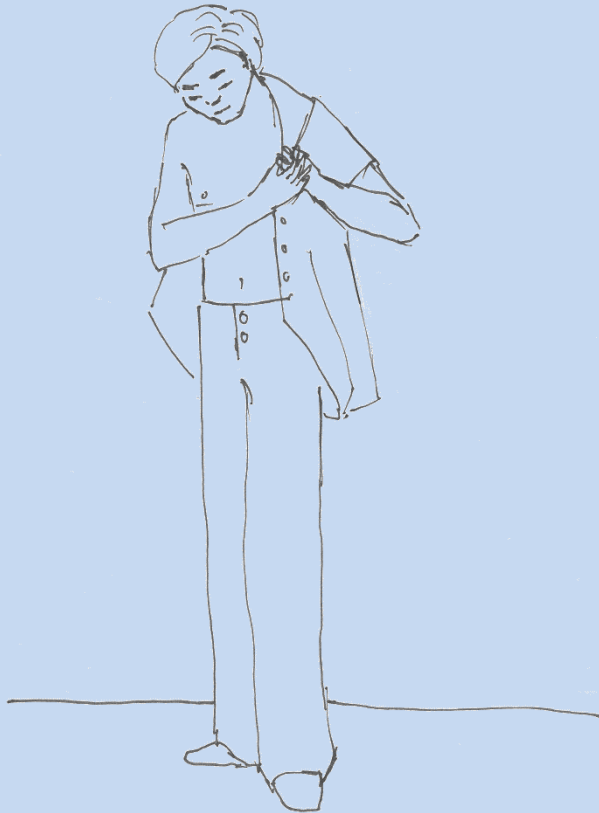
- a) go shopping
- b) do the dishes
- c) cook

3. Tom always _____ before going to work.



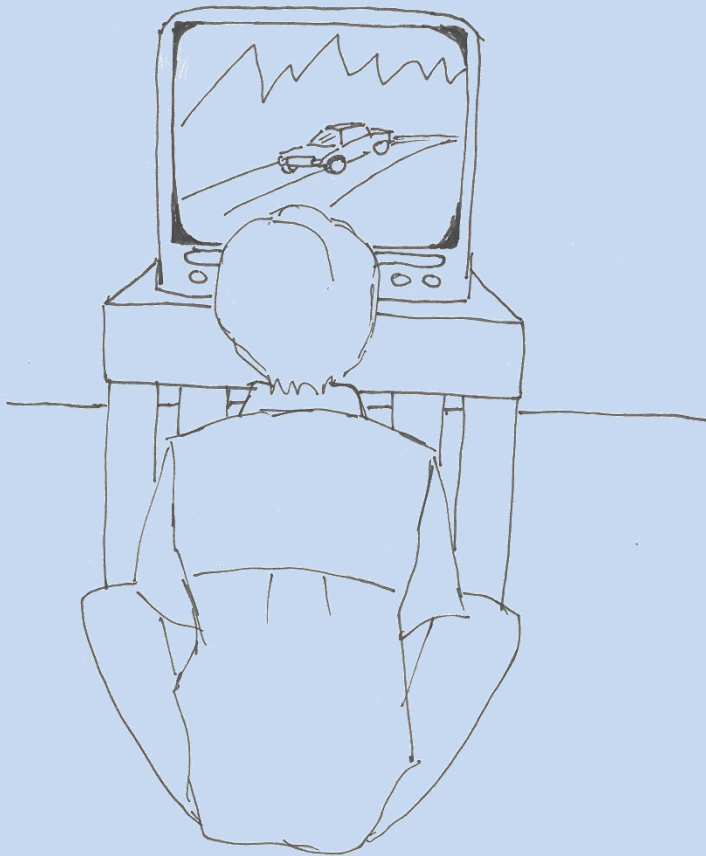
- a) takes a bath
- b) takes a shower
- c) has breakfast

4. After breakfast, Lucas _____.



- a) takes a shower
- b) has lunch
- c) gets dressed

5. He _____ TV in the evening.



- a) watches
- b) looks at
- c) follows

6. When she comes home from school,
she _____ her homework.



- a) has
- b) gives
- c) does

7. Lily _____ to work every day.



a) drives

b) walks

c) runs

8. Emily _____ her teeth twice a day.

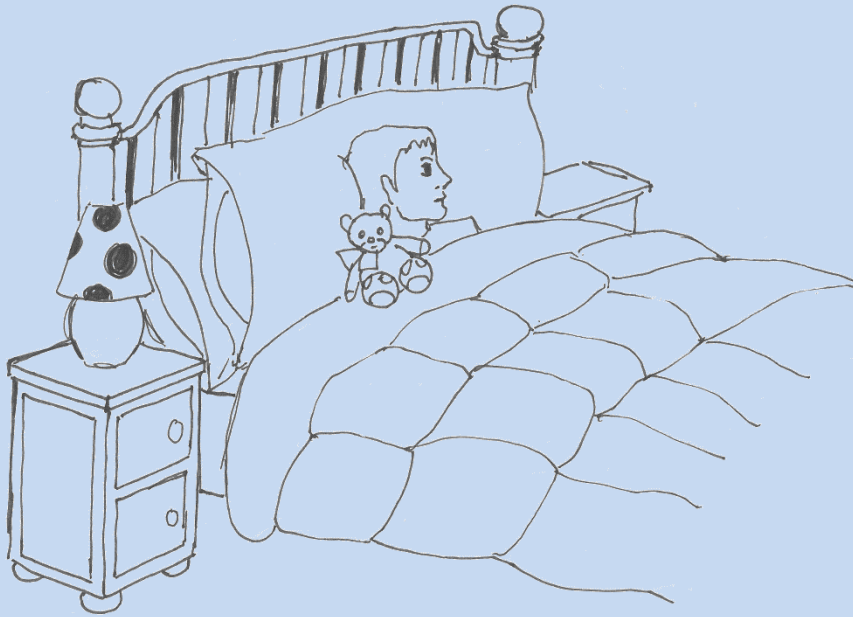


- a) brushes
- b) gives
- c) takes

Check your answers.

Choose the correct answer.

1. He usually _____ at 10 p.m.



- a) wakes up
- b) goes to bed**
- c) eats

2. Anna likes to _____ every day.



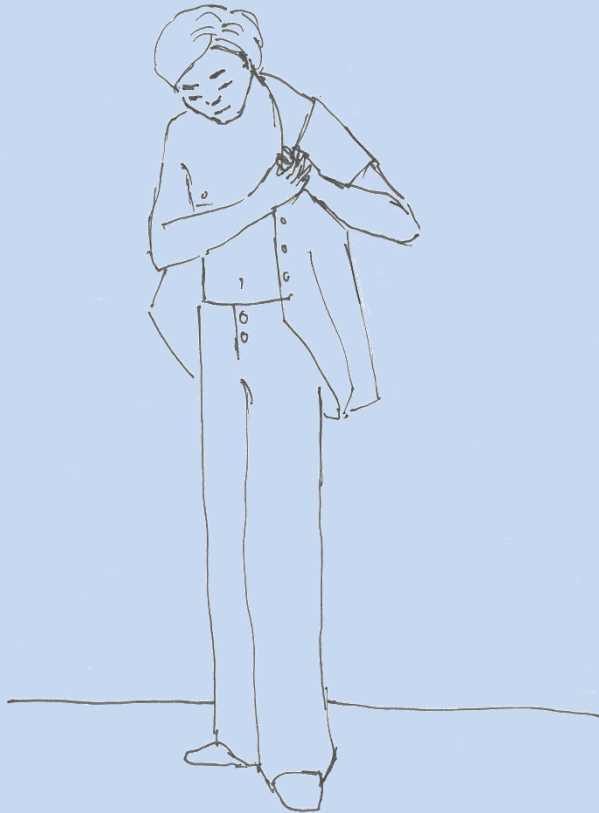
- a) go shopping
- b) do the dishes
- c) cook

3. Tom always _____ before going to work.



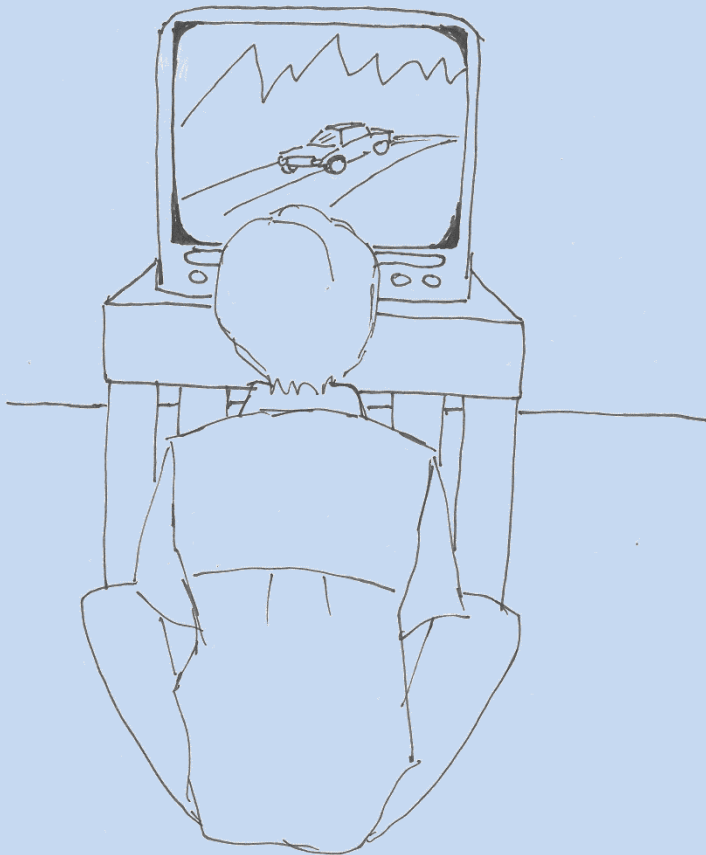
- a) takes a bath
- b) takes a shower**
- c) has breakfast

4. After breakfast, Lucas _____.



- a) takes a shower
- b) has lunch
- c) gets dressed

5. He _____ TV in the evening.



a) watches

b) looks at

c) follows

6. When she comes home from school,
she _____ her homework.



- a) has
- b) gives
- c) does

7. Lily _____ to work every day.



a) drives

b) walks

c) runs

8. Emily _____ her teeth twice a day.



a) brushes

b) gives

c) takes

**Write sentences. Use the right form of the verb
(arrive or arrives etc.).**

Example:

always / early / Sue / arrive

Sue always arrives early.

to the theatre / never / I / go

to the theatre / never / I / go

I never go to the theatre.

work / Martina / hard / always

work / Martina / hard / always

Martina always works hard.

like / chocolate / children / usually

like / chocolate / children / usually

Children usually like chocolate.

often / people's names / I / forget

often / people's names / I / forget

I often forget people's names.

Tina / by bus / to school / sometimes / go

Tina / by bus / to school / sometimes / go

Tina sometimes goes to school by bus.

usually / dinner / we / have / at 7.30

usually / dinner / we / have / at 7.30

We usually have dinner at 7.30.

Look at the chart. Answer the questions.

	Rob	Sally
play the guitar	✓	✓
collect stamps	✓	✗
get up at six	✗	✓
walk to school	✗	✓
go swimming	✗	✓
play tennis	✓	✗

1. Does Rob get up at six?
2. Does Rob play the guitar?
3. Does Sally go swimming?
4. Does Sally play tennis?
5. Who walks to school?
6. What does Rob collect?
7. When does Sally get up?

Look at the chart again. Do you do these things?
Write. (I play the guitar. / I don't play the guitar.)

	Rob	Sally
play the guitar	✓	✓
collect stamps	✓	✗
get up at six	✗	✓
walk to school	✗	✓
go swimming	✗	✓
play tennis	✓	✗

Now work with a partner. Ask and answer.

Do you play the guitar?

- Yes, I do.
- No, I don't play.

Do you

play the guitar

collect stamps

get up at six

walk to school

go swimming

play tennis

?

Complete the questions. Use present simple.

1. _____? I work in a bookshop.
2. _____? At 8 o'clock.
3. _____? Yes, I do.
4. _____? In a bank.
5. _____? He's a dentist.
6. _____? No, he doesn't.
7. _____? Usually by bus.
8. _____? Biology.

Possible questions.

1. What do you do?

I work in a bookshop.

2. _____?

At 8 o'clock.

3. _____?

Yes, I do.

4. _____?

In a bank.

5. _____?

He's a dentist.

6. _____?

No, he doesn't.

7. _____?

Usually by bus.

8. _____?

Biology.

Possible questions.

- | | |
|-----------------------------|-----------------------|
| 1. What do you do? | I work in a bookshop. |
| 2. When does the shop open? | At 8 o'clock. |
| 3. _____? | Yes, I do. |
| 4. _____? | In a bank. |
| 5. _____? | He's a dentist. |
| 6. _____? | No, he doesn't. |
| 7. _____? | Usually by bus. |
| 8. _____? | Biology. |

Possible questions.

- | | |
|-----------------------------|-----------------------|
| 1. What do you do? | I work in a bookshop. |
| 2. When does the shop open? | At 8 o'clock. |
| 3. Do you like tomatoes? | Yes, I do. |
| 4. _____? | In a bank. |
| 5. _____? | He's a dentist. |
| 6. _____? | No, he doesn't. |
| 7. _____? | Usually by bus. |
| 8. _____? | Biology. |

Possible questions.

- | | |
|-----------------------------|-----------------------|
| 1. What do you do? | I work in a bookshop. |
| 2. When does the shop open? | At 8 o'clock. |
| 3. Do you like tomatoes? | Yes, I do. |
| 4. Where does she work? | In a bank. |
| 5. _____? | He's a dentist. |
| 6. _____? | No, he doesn't. |
| 7. _____? | Usually by bus. |
| 8. _____? | Biology. |

Possible questions.

- | | |
|-----------------------------|-----------------------|
| 1. What do you do? | I work in a bookshop. |
| 2. When does the shop open? | At 8 o'clock. |
| 3. Do you like tomatoes? | Yes, I do. |
| 4. Where does she work? | In a bank. |
| 5. What is his job? | He's a dentist. |
| 6. _____? | No, he doesn't. |
| 7. _____? | Usually by bus. |
| 8. _____? | Biology. |

Possible questions.

- | | |
|------------------------------|-----------------------|
| 1. What do you do? | I work in a bookshop. |
| 2. When does the shop open? | At 8 o'clock. |
| 3. Do you like tomatoes? | Yes, I do. |
| 4. Where does she work? | In a bank. |
| 5. What is his job? | He's a dentist. |
| 6. Does he work at weekends? | No, he doesn't. |
| 7. _____? | Usually by bus. |
| 8. _____? | Biology. |

Possible questions.

1. What do you do? I work in a bookshop.
2. When does the shop open? At 8 o'clock.
3. Do you like tomatoes? Yes, I do.
4. Where does she work? In a bank.
5. What is his job? He's a dentist.
6. Does he work at weekends? No, he doesn't.
7. How do you go to school? Usually by bus.
8. _____? Biology.

Possible questions.

1. What do you do? I work in a bookshop.
2. When does the shop open? At 8 o'clock.
3. Do you like tomatoes? Yes, I do.
4. Where does she work? In a bank.
5. What is his job? He's a dentist.
6. Does he work at weekends? No, he doesn't.
7. How do you go to school? Usually by bus.
8. What is your favourite subject? Biology.



ZŠ ÚPRKOVA

INVESTICE DO ROZVOJE VZDĚLÁVÁNÍ

Tento materiál byl vytvořen rámci projektu EU peníze školám
Operačního programu Vzdělávání pro konkurenceschopnost



Použití zdroje:

HUTCHINSON, Tom. *Project*. Oxford: Oxford University Press, c1999, 80 s. ISBN 01-943-6523-9.

BOURKE, Marjorie Fuchs. *Grammar express: for self-study or the classroom ; with answers*. 2. impr. Harlow: Longman, 2004. ISBN 05-827-7645-7.

MURPHY, Raymond. *Essential grammar in use: a self-study reference and practice book for elementary students of English : with answers*. 2nd ed. Cambridge: Cambridge University Press, 1997, 300 s. ISBN 05-215-5928-6.

Citace:

autor obrázků: Monika Streckerová

Anotace: