

# PROJEKT EU peníze školám



**Střední škola**  
*uměleckomanažerská, s.r.o.*

**Číslo projektu:** CZ.1.07/1.5.00/34.0320

**Název projektu:** Moderní škola

**Název školy:** Střední škola uměleckomanažerská, s.r.o., Táborská 185, Brno

**Předmět:** Multimediální technologie a technika

**Téma:** Jevištní světla

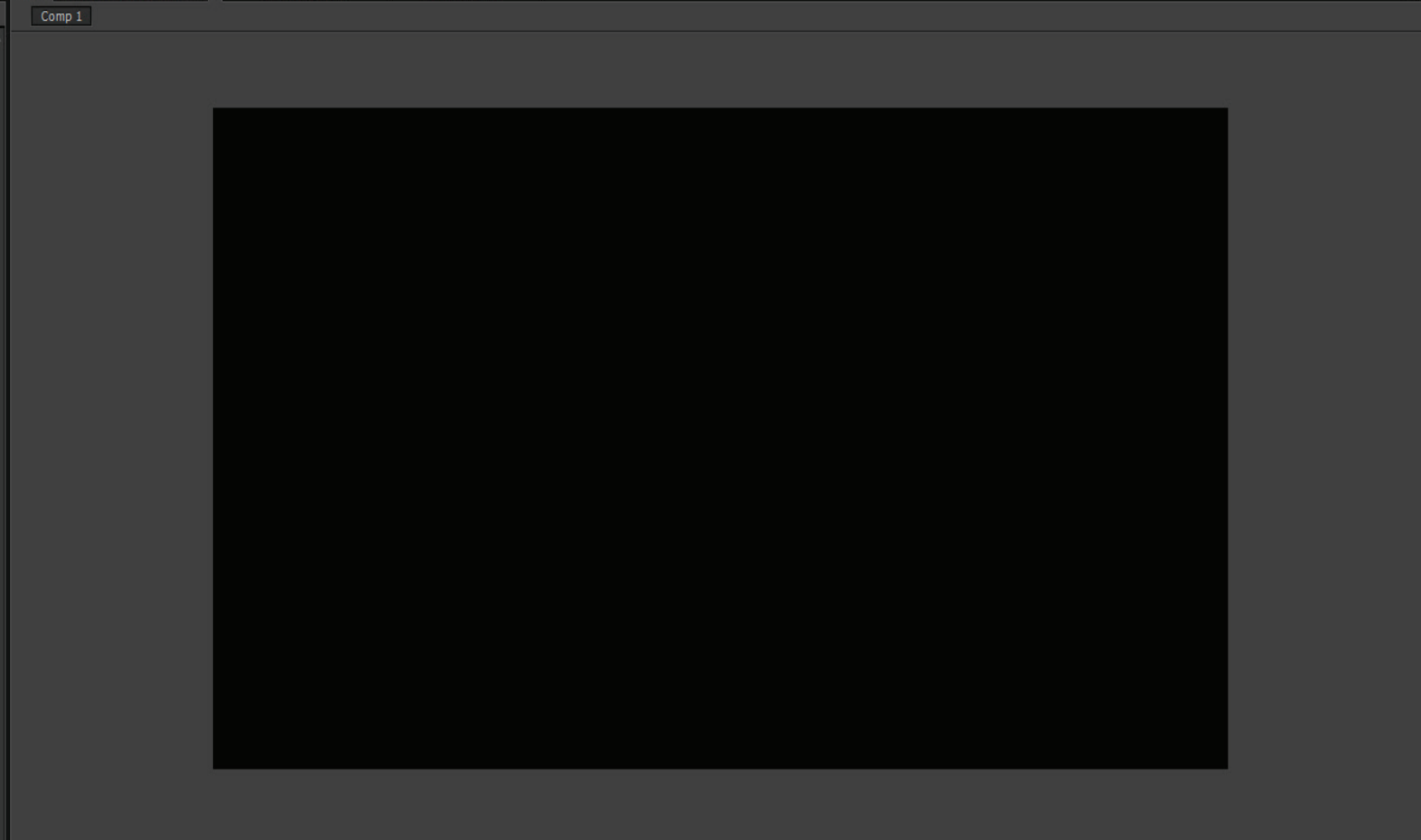
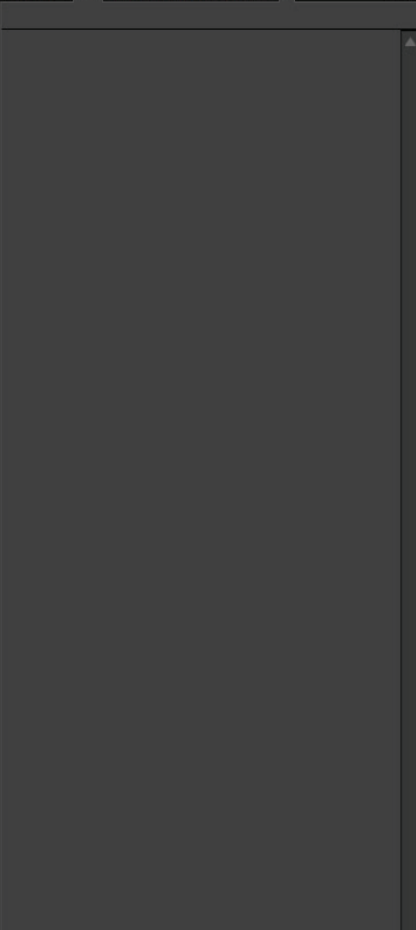
**Ročník:** 2.ročník

**Jméno autora:** Mgr. Adéla Wiederlechnerová

**Číslo šablony:** VY\_32\_INOVACE\_WIE\_MTT.2\_3\_10



INVESTICE DO ROZVOJE VZDĚLÁVÁNÍ



Info

R :	X : -264
G :	+ Y : 424
B :	
A : 0	

Audio

Effects & Presets

stroke

- Fractal
- Grid
- Lens Flare
- Paint Bucket
- Radio Waves
- Ramp
- Scribble
- Stroke
- Vegas
- Write-on
- Stylize
- Brush Strokes

Tracker

Align

Smoother

Wiggler

Motion Sketch

Mask Interpolation

Paint

Brushes

Paragraph

Character

50% 0:00:03:04 Third Active Camera 1 View +0,0

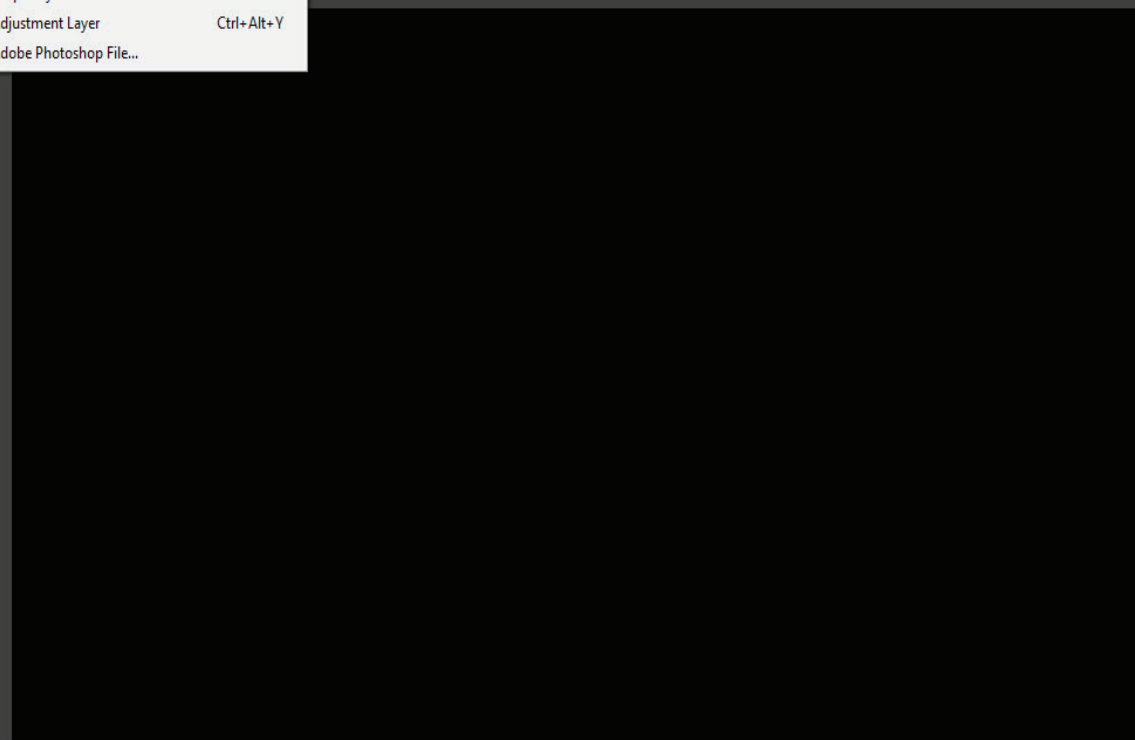
Render Queue Comp 1

0:00:03:04 00079 (25.00 fps)

Source Name	Mode	T	TrkMat	Parent

- New
- Layer Settings... Ctrl+Shift+Y
- Open Layer
- Open Layer Source Alt+Numpad Enter
- Mask
- Mask and Shape Path
- Quality
- Switches
- Transform
- Time
- Frame Blending
- 3D Layer
- Guide Layer
- Environment Layer
- Add Marker Numpad \*
- Preserve Transparency
- Blending Mode
- Next Blending Mode Shift+=
- Previous Blending Mode Shift+-
- Track Matte
- Layer Styles
- Group Shapes Ctrl+G
- Ungroup Shapes Ctrl+Shift+G
- Arrange
- Convert to Editable Text
- Create Shapes from Text
- Create Masks from Text
- Create Shapes from Vector Layer
- Camera
- Auto-trace...
- Pre-compose... Ctrl+Shift+C

- Text Ctrl+Alt+Shift+T
- Solid... Ctrl+Y
- Light... Ctrl+Alt+Shift+L
- Camera... Ctrl+Alt+Shift+C
- Null Object Ctrl+Alt+Shift+Y
- Shape Layer
- Adjustment Layer Ctrl+Alt+Y
- Adobe Photoshop File...



Preview

Info

R :	X : -338
G :	+ Y : 1066
B :	
A : 0	

Audio

- Effects & Presets
- stroke
- Fractal
  - Grid
  - Lens Flare
  - Paint Bucket
  - Radio Waves
  - Ramp
  - Scribble
  - Stroke
  - Vegas
  - Write-on
  - Stylize
  - Brush Strokes

50% 0:00:03:04 Third Active Camera 1 View +0,0

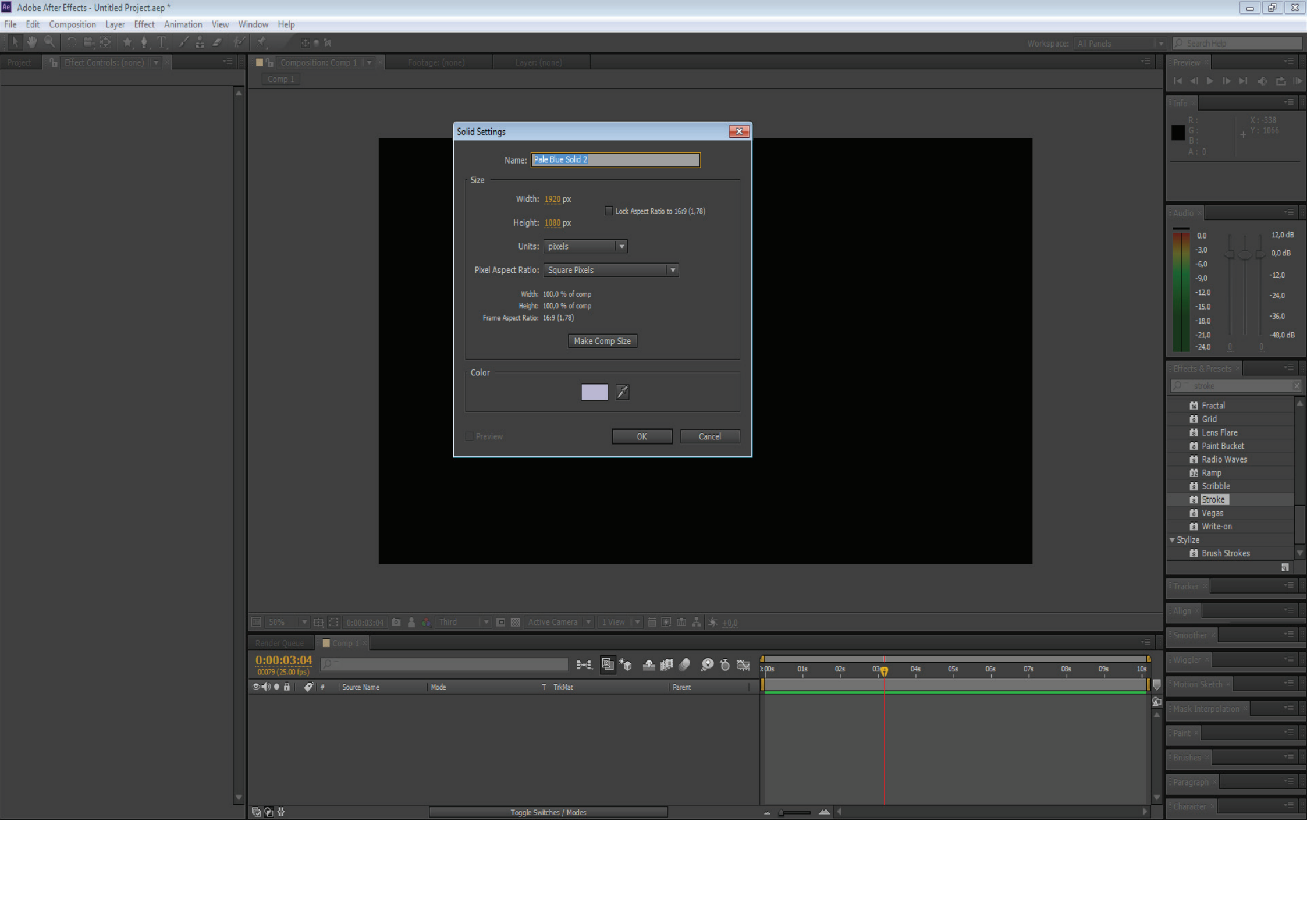
Render Queue Comp 1

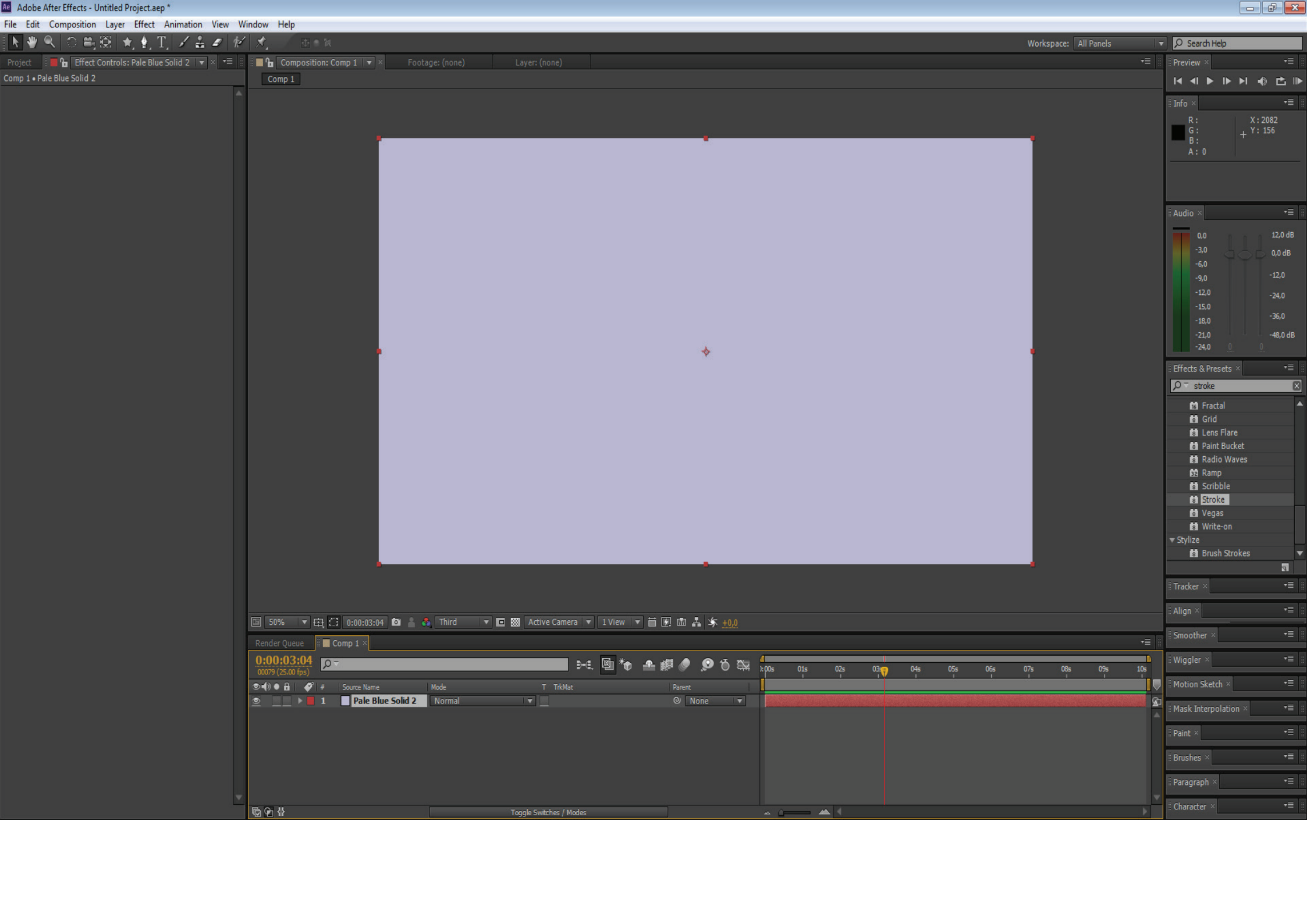
0:00:03:04 00079 (25.00 fps)

Source Name	Mode	T	TrkMat	Parent

Toggle Switches / Modes

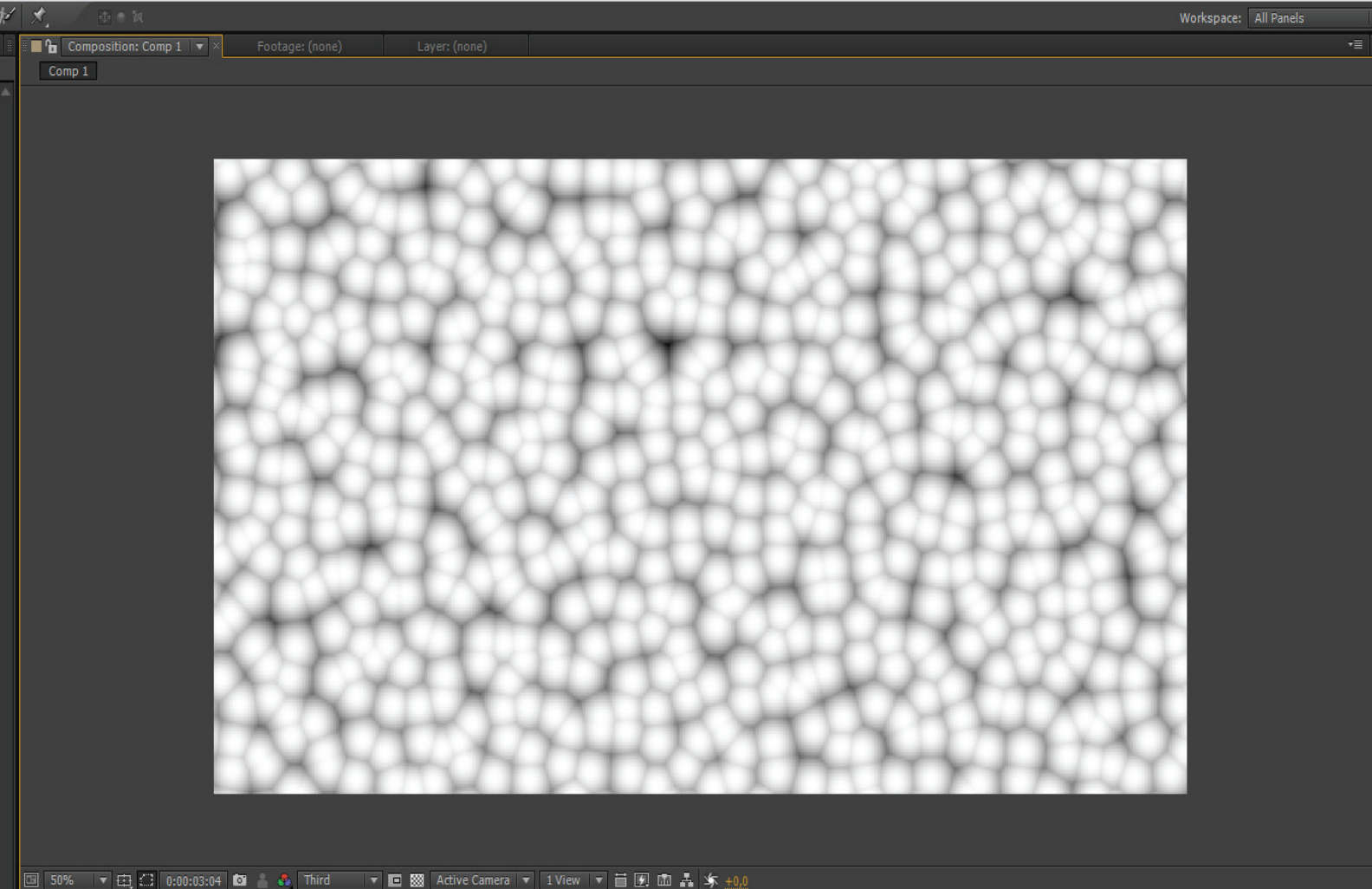
- Tracker
- Align
- Smoother
- Wiggler
- Motion Sketch
- Mask Interpolation
- Paint
- Brushes
- Paragraph
- Character





Comp 1 • Pale Blue Solid 2

- Cell Pattern
  - Cell Pattern: Bubbles
  - Invert:
  - Contrast: 100,00 (0,00 to 600,00)
  - Overflow: Clip
  - Disperse: 1,00
  - Size: 60,0
  - Offset: 960,0,540,0
  - Tiling Options
  - Evolution: 0x +0,0°
  - Evolution Options



50% 0:00:03:04 Third Active Camera 1 View +0,0

Render Queue Comp 1

0:00:03:04 00079 (25.00 fps)

Source Name	Mode	TrkMat	Parent
1 Pale Blue Solid 2	Normal		None

Preview

Info

R : X : 1952  
G : Y : 504  
B : +  
A : 0

Audio

0,0 12,0 dB  
-3,0 0,0 dB  
-6,0  
-9,0 -12,0  
-12,0 -24,0  
-15,0 -36,0  
-18,0 -48,0 dB  
-21,0  
-24,0

Effects & Presets

cell pattern

- Generate
  - Cell Pattern

Tracker

Align

Smoother

Wiggler

Motion Sketch

Mask Interpolation

Paint

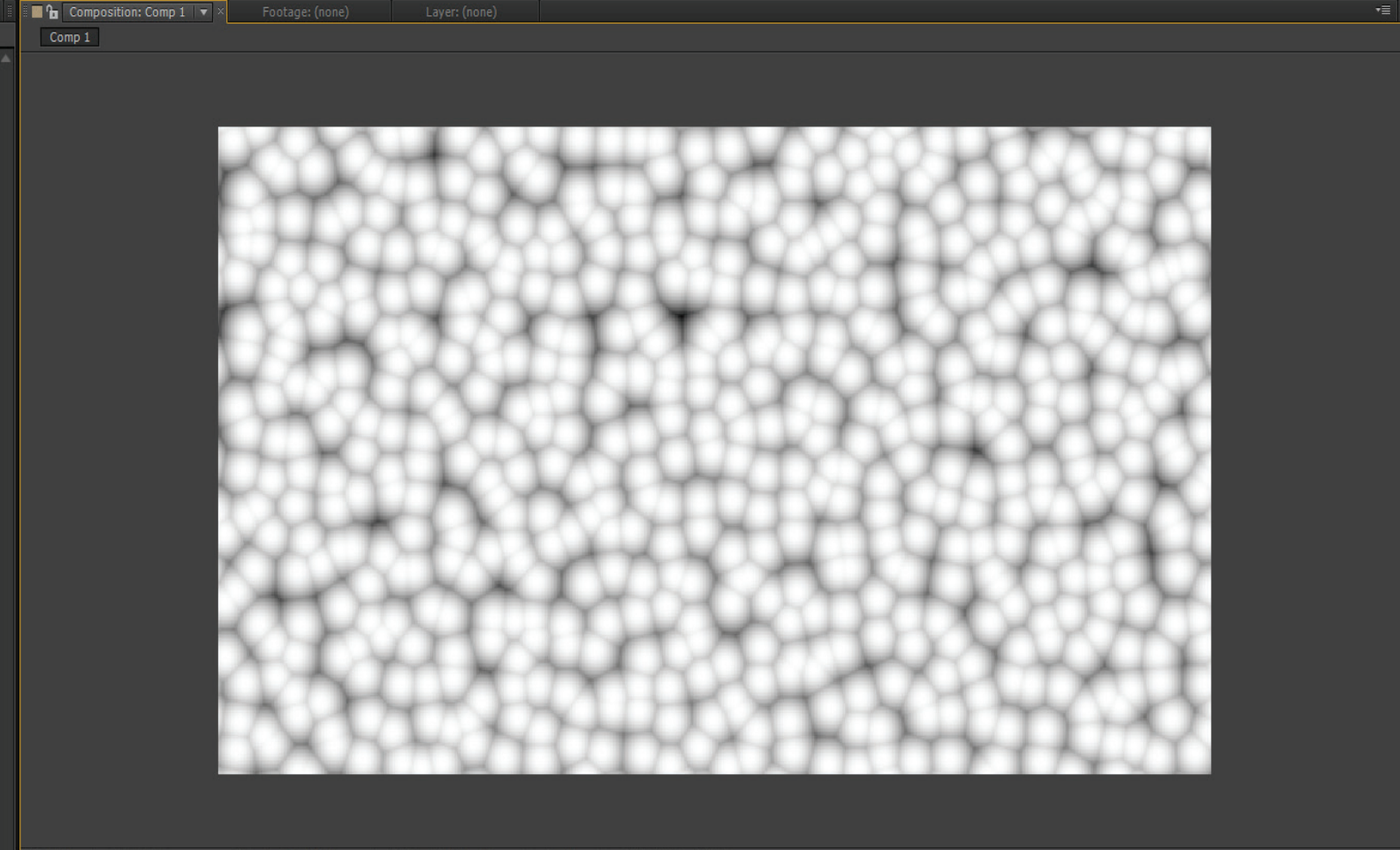
Brushes

Paragraph

Character

Comp 1 • Pale Blue Solid 2

- Cell Pattern
  - Cell Pattern: Bubbles
  - Invert:
  - Contrast: 100,00 (0,00 to 600,00)
  - Overflow: Clip
  - Disperse: 1,00
  - Size: 60,0
  - Offset: 960,0,540,0
  - Tiling Options
  - Evolution: 0x +0,0°
  - Evolution Options



50% 0:00:03:04 Third Active Camera 1 View +0,0

Render Queue Comp 1

0:00:03:04 00079 (25.00 fps)

Source Name	Mode	TrkMat	Parent
1 Pale Blue Solid 2	Normal		None

Preview

Info

R : X : 1952  
G : Y : 504  
B : +  
A : 0

Audio

0,0 12,0 dB  
-3,0 0,0 dB  
-6,0  
-9,0 -12,0  
-12,0 -24,0  
-15,0 -36,0  
-18,0 -48,0 dB  
-21,0  
-24,0

Effects & Presets

cell pattern

- Generate
  - Cell Pattern

Tracker

Align

Smoother

Wiggler

Motion Sketch

Mask Interpolation

Paint

Brushes

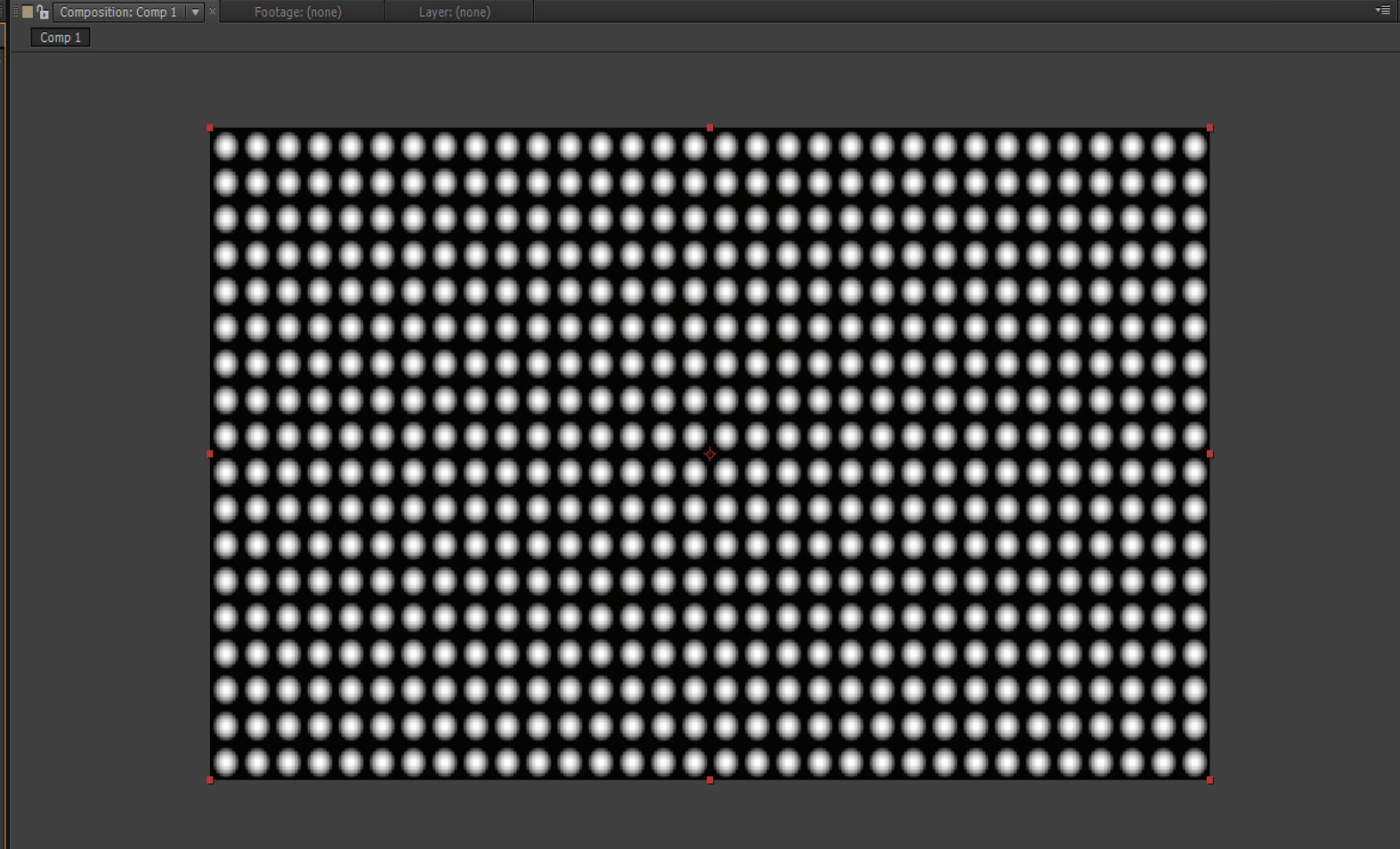
Paragraph

Character

Comp 1 • Pale Blue Solid 2

**Cell Pattern** Reset About...

- Cell Pattern: Bubbles
- Invert
- Contrast: 700,00 (0,00 to 600,00)
- Overflow: Clip
- Disperse: 0,00
- Size: 60,0
- Offset: 960,0, 540,0
- Tiling Options
- Evolution: 0x +0,0°
- Evolution Options



Render Queue: Comp 1

0:00:03:04 (00079 (25.00 fps))

#	Source Name	Mode	TrkMat	Parent
1	Pale Blue Solid 2	Normal		None

Timeline: 0:00s to 10s

Toggle Switches / Modes

Workspace: All Panels

Search Help

Preview

Info: R: 81, G: 81, B: 81, A: 255; X: 704, Y: 890

Audio: 0,0 to -24,0 dB

Effects & Presets: cell pattern

- Generate
- Cell Pattern

Tracker

Align

Smoother

Wiggler

Motion Sketch

Mask Interpolation

Paint

Brushes

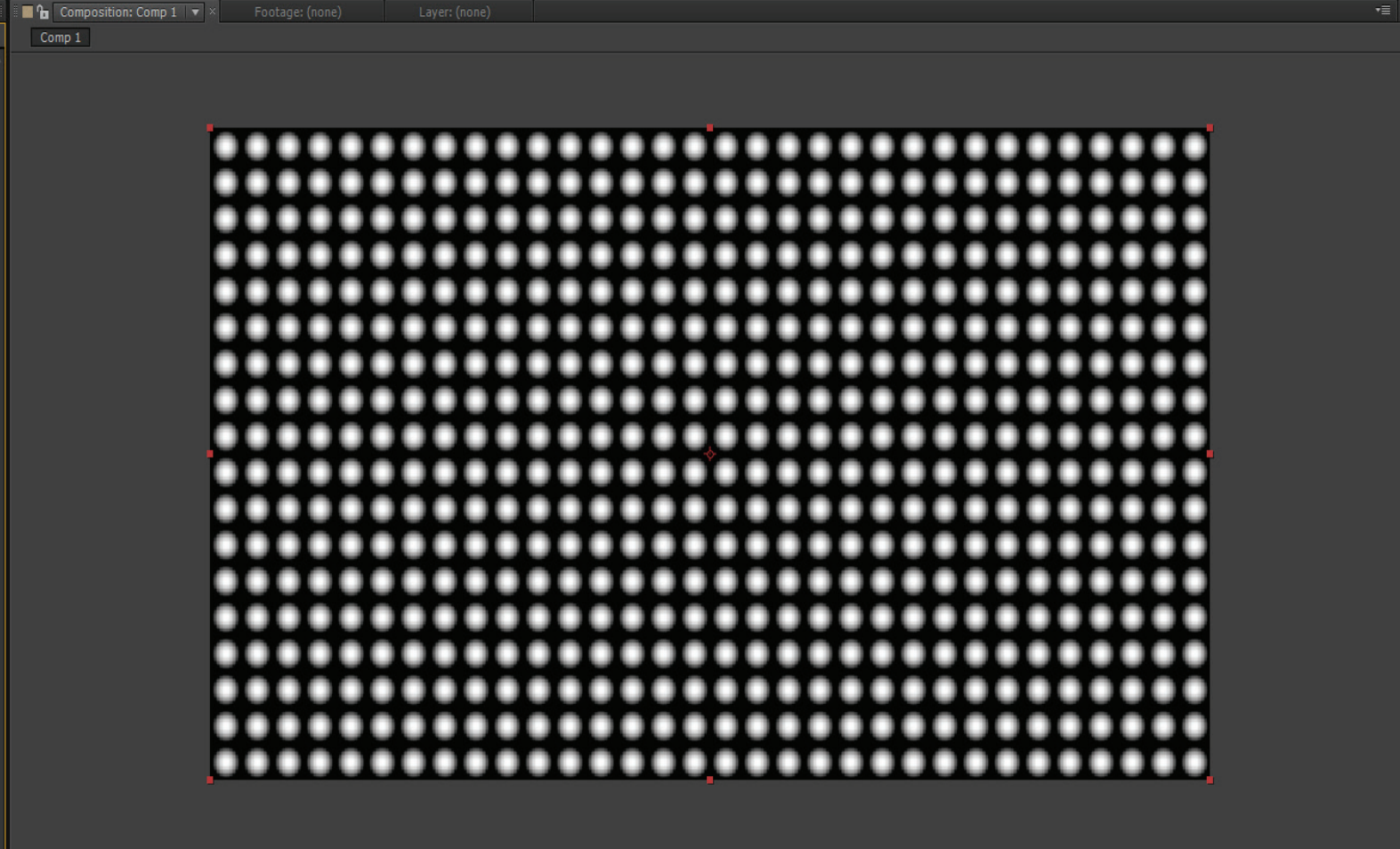
Paragraph

Character

Comp 1 • Pale Blue Solid 2

**Cell Pattern** Reset About...

- Cell Pattern: Bubbles
- Invert
- Contrast: 700,00 (0,00 to 600,00)
- Overflow: Clip
- Disperse: 0,00
- Size: 60,0
- Offset: 960,0, 540,0
- Tiling Options
- Evolution: 0x +0,0°
- Evolution Options



50% 0:00:03:04 Third Active Camera 1 View +0,0

Render Queue Comp 1

0:00:03:04 00079 (25.00 fps)

#	Source Name	Mode	TrkMat	Parent
1	Pale Blue Solid 2	Normal		None

Preview

Info

R : 81 X : 704  
G : 81 + Y : 890  
B : 81  
A : 255

Audio

0,0 12,0 dB  
-3,0 0,0 dB  
-6,0  
-9,0 -12,0  
-15,0 -24,0  
-18,0 -36,0  
-21,0 -48,0 dB  
-24,0

Effects & Presets

cell pattern

Generate

- Cell Pattern

Tracker

Align

Smoother

Wiggler

Motion Sketch

Mask Interpolation

Paint

Brushes

Paragraph

Character

**Cell Pattern** [Reset](#) [About...](#)

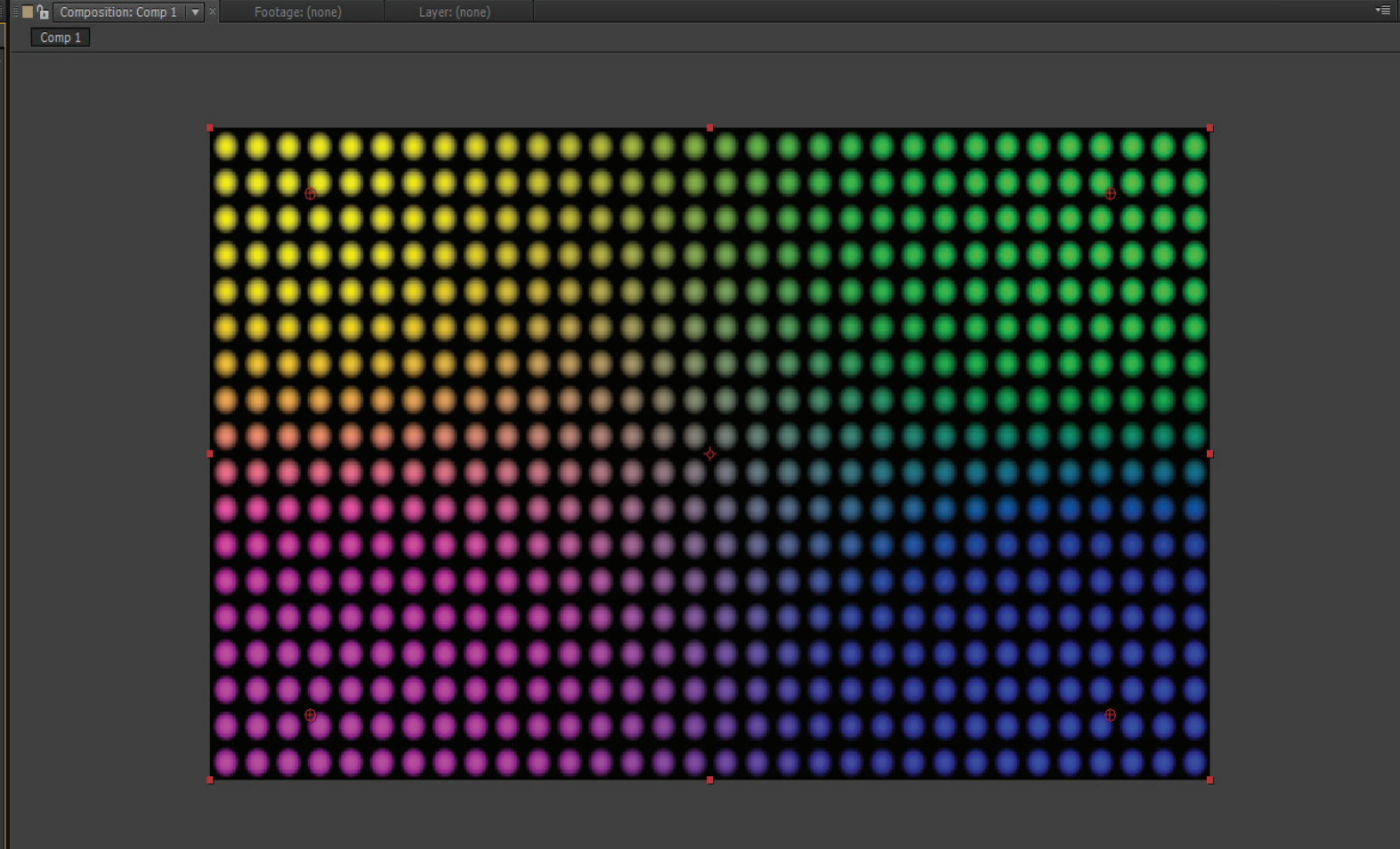
- Cell Pattern: Bubbles
- Invert:
- Contrast: 700,00
- Overflow: Clip
- Disperse: 0,00
- Size: 60,0
- Offset: 960,0,540,0
- Evolution: 0x +0,0°

**4-Color Gradient** [Reset](#) [About...](#)

Positions & Colors

- Point 1: 192,0,108,0
- Color 1:
- Point 2: 1728,0,108,0
- Color 2:
- Point 3: 192,0,972,0
- Color 3:
- Point 4: 1728,0,972,0
- Color 4:

Blend: 100,0  
Jitter: 0,0%  
Opacity: 100,0%  
Blending Mode: Multiply



50% 0:00:03:04 Third Active Camera 1 View +0,0

Render Queue: Comp 1

0:00:03:04  
00079 (25.00 fps)

#	Source Name	Mode	TrkMat	Parent
1	Pale Blue Solid 2	Normal		None

Toggle Switches / Modes

Preview

Info

R: X: -190  
G: Y: 1186  
B: +  
A: 0

Audio

0,0 12,0 dB  
-3,0 0,0 dB  
-6,0  
-9,0  
-12,0  
-15,0  
-18,0  
-21,0  
-24,0

Effects & Presets

4

- Animation Presets
  - Image - Creative
    - Grayscale 4
  - Shapes
    - Sprites - Still
      - RayStar-4
  - Text
    - Miscellaneous
      - Hop Ski...A Jump 4
- Generate
  - 4-Color Gradient

Tracker

Align

Smoother

Wiggler

Motion Sketch

Mask Interpolation

Paint

Brushes

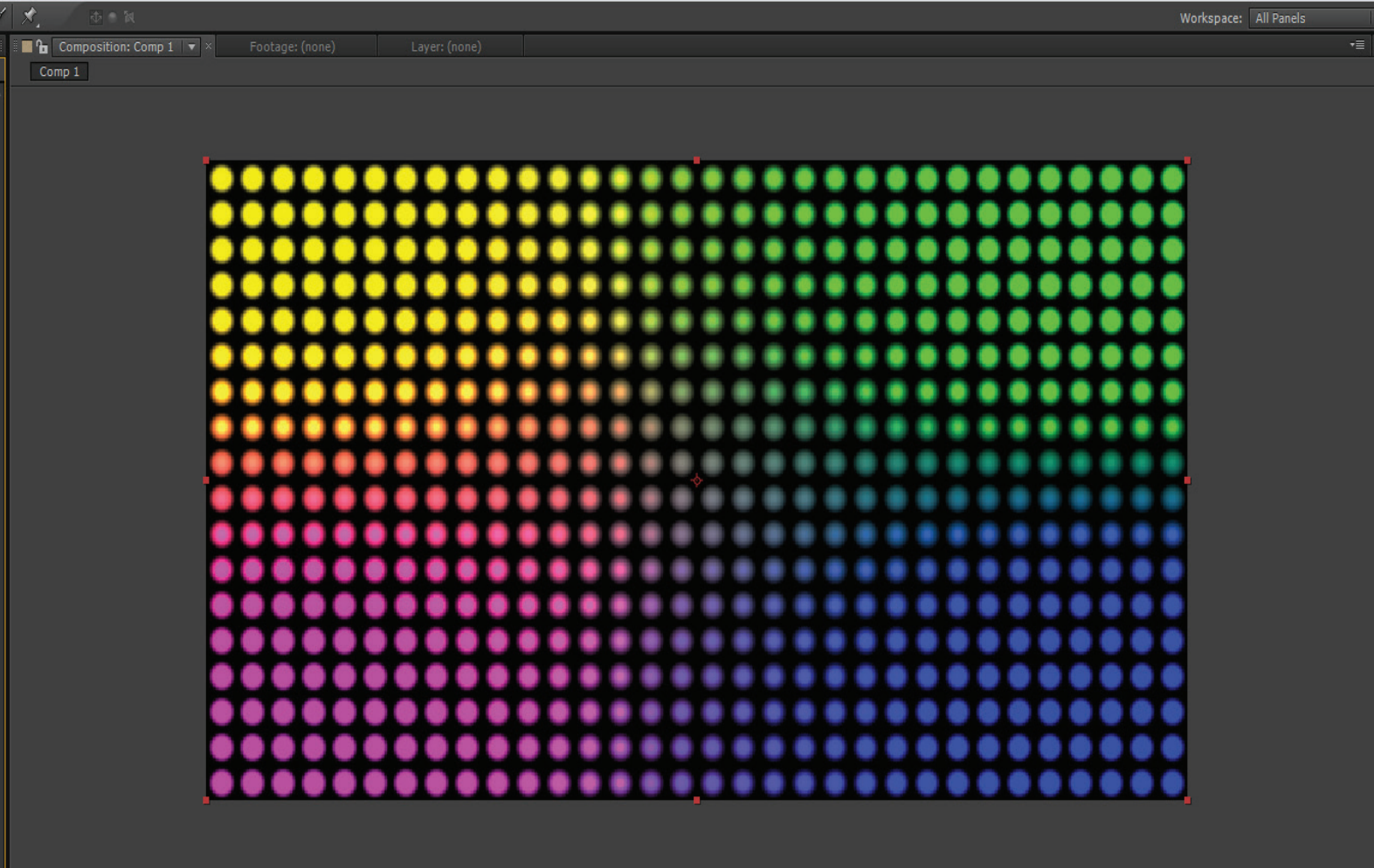
Paragraph

Character

Project: Effect Controls: Pale Blue Solid 2

Comp 1 • Pale Blue Solid 2

- Cell Pattern
  - Cell Pattern: Bubbles
  - Invert:
  - Contrast: 700,00
  - Overflow: Clip
  - Disperse: 0,00
  - Size: 60,0
  - Offset: 960,0,540,0
  - Evolution: 0x + 0,0°
- 4-Color Gradient
  - Point 1: 192,0,108,0
  - Color 1: Yellow
  - Point 2: 1728,0,108,0
  - Color 2: Green
  - Point 3: 192,0,972,0
  - Color 3: Pink
  - Point 4: 1728,0,972,0
  - Color 4: Blue
  - Blend: 100,0
  - Jitter: 0,0%
  - Opacity: 100,0%
  - Blending Mode: Multiply
- Glow
  - Glow Based On: Color Channels
  - Glow Threshold: 60,0%
  - Glow Radius: 10,0
  - Glow Intensity: 1,0
  - Composite Original: Behind
  - Glow Operation: Add
  - Glow Colors: Original Colors
  - Color Looping: Triangle A>B>A
  - Color Loops: 1,0
  - Color Phase: 0x + 0,0°
  - A & B Midpoint: 50%
  - Color A: White
  - Color B: Black
  - Glow Dimensions: Horizontal and Vertical



Render Queue: Comp 1

0:00:03:04  
00079 (25.00 fps)

Source Name	Mode	TrkMat	Parent
1 Pale Blue Solid 2	Normal		None

Timeline: 0:00s to 10s

Workspace: All Panels

Search Help

Preview

Info: R: 19, G: 42, B: 79, A: 255; X: 1364, Y: 676

Audio: 0,0 dB to -48,0 dB

Effects & Presets: glo, Animation Presets, Image - Creative, Dimension...ow+shadow, Stylize, Glow

Tracker

Align

Smoother

Wiggler

Motion Sketch

Mask Interpolation

Paint

Brushes

Paragraph

Character

Project: Effect Controls: Pale Blue Solid 2

Comp 1 • Pale Blue Solid 2

- Cell Pattern
  - Cell Pattern: Bubbles
  - Invert:
  - Contrast: 700,00 (0,00 to 600,00)
  - Overflow: Clip
  - Disperse: 0,00
  - Size: 60,0
  - Offset: 960,0, 540,0
  - Tiling Options
  - Evolution: 0x +0,0°
  - Evolution Options
- 4-Color Gradient
  - Positions & Colors
    - Point 1: 192,0, 108,0
    - Color 1: Yellow
    - Point 2: 1728,0, 108,0
    - Color 2: Green
    - Point 3: 192,0, 972,0
    - Color 3: Pink
    - Point 4: 1728,0, 972,0
    - Color 4: Blue
  - Blend: 100,0
  - Jitter: 0,0%
  - Opacity: 100,0%
  - Blending Mode: Multiply
- Glow
  - Glow Based On: Color Channels
  - Glow Threshold: 32,5%
  - Glow Radius: 29,0
  - Glow Intensity: 1,0
  - Composite Original: Behind
  - Glow Operation: Add
  - Glow Colors: Original Colors
  - Color Looping: Triangle A>B>A
  - Color Loops: 1,0
  - Color Phase: 0x +0,0°
  - A & B Midpoint: 50%
  - Color A: White
  - Color B: Black
  - Glow Dimensions: Horizontal and Vertical

Composition: Comp 1 | Footage: (none) | Layer: (none)

Comp 1

50% | 0:00:03:04 | Third | Active Camera | 1 View | +0,0

Render Queue: Comp 1

0:00:03:04 (00079 (25.00 fps))

Source Name	Mode	TrkMat	Parent
1 Pale Blue Solid 2	Normal		None

Toggle Switches / Modes

Workspace: All Panels | Search Help

Preview

Info

R: 0 X: 1464  
G: 37 Y: 538  
B: 34 +  
A: 255

Audio

0,0 12,0 dB  
-3,0 0,0 dB  
-6,0  
-9,0 -12,0  
-12,0 -24,0  
-15,0  
-18,0 -36,0  
-21,0 -48,0 dB  
-24,0

Effects & Presets

glo

- \* Animation Presets
  - Image - Creative
    - Dimensi...ow+shadow
  - Stylize
    - Glow

Tracker

Align

Smoother

Wiggler

Motion Sketch

Mask Interpolation

Paint

Brushes

Paragraph

Character

Obrazová příloha - vlastní archiv ( Print Screen )